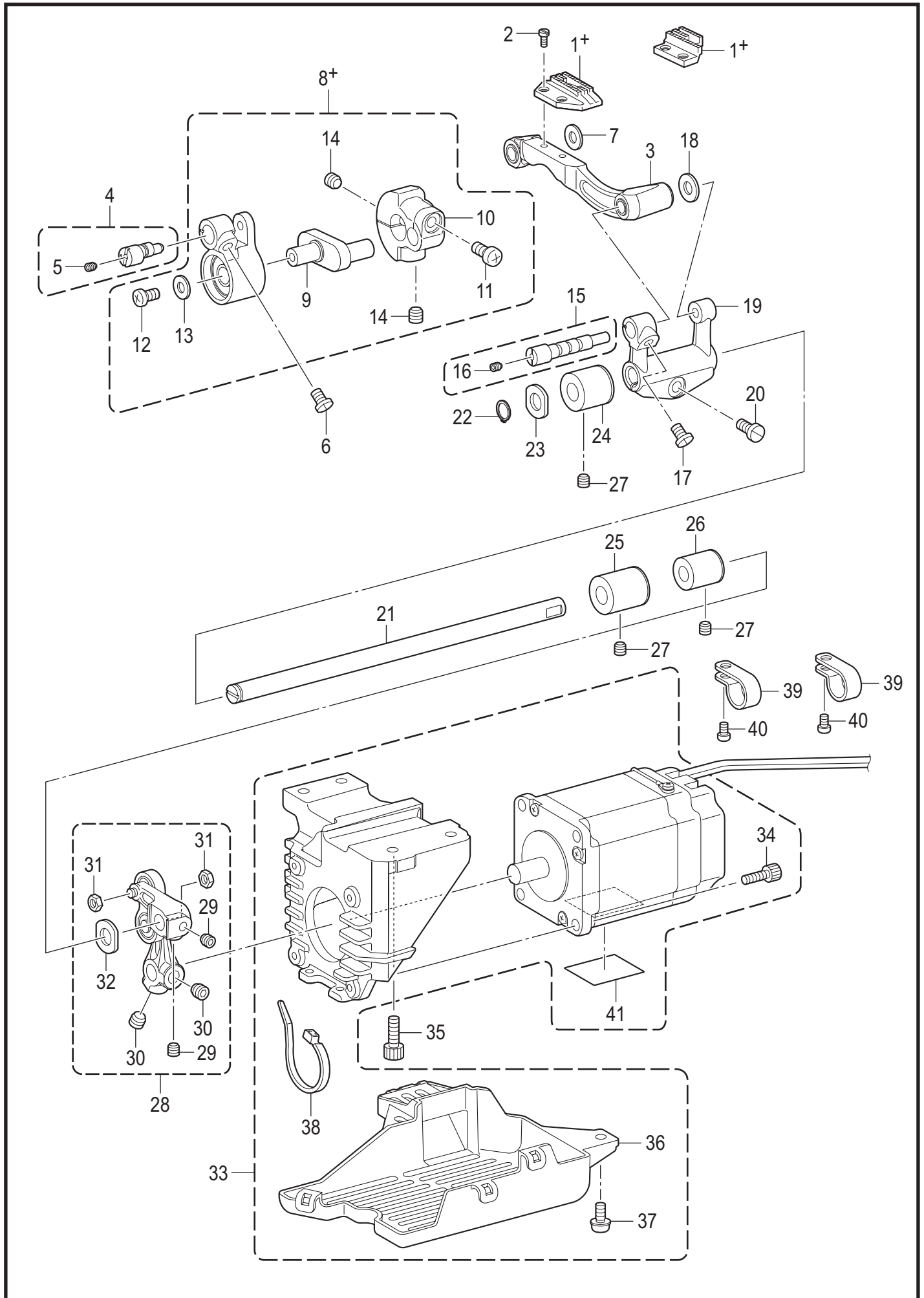


D. 送料装置 / Feed mechanism

S7250A

参照号	零部件序号	数量	零部件名称	NAME OF PARTS	RM
1+	SB7300001	1	<用于-□03> 偏心轮带螺钉 3	<For -□03> ECCENTRIC WHEEL W/S 3	
1+	SB7303001	1	<用于-□05> 偏心轮带螺钉 5	<For -□05> ECCENTRIC WHEEL W/S 5	
2	SB7289001	1	水平送布轴	FEED ROCKER SHAFT	
3	048080142	1	轴用挡圈 C8	RETAINING RING EXTERNAL C8	
4	SB4882001	1	送布轴轴套 L	FEED SHAFT BUSH L	
5	SB4883001	1	送布轴轴套 M	FEED SHAFT BUSH M	
6	SB4884001	1	送布轴轴套 R	FEED SHAFT BUSH R	
7	012500536	1	螺钉 M5X5	SET SCREW SOCKET (FT) M5X5	
8	SB4893101	1	垫圈8	WASHER PLAIN 8	
9	SB4887001	1	送布台臂	FEED ROCK BRACKET ARM	
10	SA7257001	1	螺钉 M5X12	SCREW 5X12	
11	SA1242001	1	螺钉 M5X7	SET SCREW 5X7	
12	SB7292101	1	送布轴总组件	FEED BAR UNIT	
13	SB7298001	1	送布轴	FEED BAR SHAFT	
14	SB4894001	1	垫圈4.2 T0.8	WASHER PLAIN 4.2 T0.8	
15	SB7381001	1	油线	WICK	
16	SB7447001	1	油管	OIL TUBE	
17+	*P.47-50	1	<用于-□03 日本> 送布牙	<For -□03 Japan> FEED DOG	
17+	*P.47-50	1	<用于-□03 日本以外> 送布牙	<For -□03 except Japan> FEED DOG	
17+	*P.47-50	1	<用于-□05 日本> 送布牙	<For -□05 Japan> FEED DOG	
17+	*P.47-50	1	<用于-□05 日本以外> 送布牙 A	<For -□05 except Japan> FEED DOG A	
18	SB4900001	2	螺钉3	SCREW M3	
19	S23651001	2	固定螺钉 M6X6	SET SCREW SOCKET (FT) M6X6	
20	SB7305001	1	抬牙连杆	V-FEED CONNECTING ROD	
21	SB7568001	1	轴位螺钉 SM7.14	SHOULDER SCREW SM7.14	
22	104689002	1	螺母 SM7.14	NUT 7.14	
23	SB3469001	1	轴用挡圈 C21	RETAINING RING EXTERNAL C21	
24	SB2314001	1	垫圈 21.5X31.5	WASHER 21.5X31.5	
25	SB7306001	1	抬牙曲柄	F-LIFTING ROCK SHAFT CRANK	
26	062501416	1	螺钉 M5X14	SCREW PAN M5X14	
27	SB7308001	1	抬牙轴	FEED LIFTING ROCKER SHAFT	
28	048120142	1	轴用挡圈 C12	RETAINING RING EXTERNAL C12	
29	SB7380001	1	油线 4X4	WICK 4X4	
30	SB7307001	1	送布轴轴套垫圈	THRUST RING	
31	SB7309001	1	上下送布轴轴套 L	BUSH L	
32	SB7310001	1	上下送布轴轴套 R	BUSH R	
33	SB7315001	1	紧圈组件	SET SCREW COLLAR ASSY	
34	S23651001	2	固定螺钉 M6X6	SET SCREW SOCKET (FT) M6X6	
35	SB7311001	1	抬压叉组件	FEED LIFTING ARM ASSY	
36	062501416	1	螺钉 M5X14	SCREW PAN M5X14	
37	SB5300201	1	曲柄短连杆总组件	FEED ROCK LINK UNIT	
38	012500536	2	螺钉 M5X5	SET SCREW SOCKET (FT) M5X5	
39	S23651001	2	固定螺钉 M6X6	SET SCREW SOCKET (FT) M6X6	
40	021350106	2	螺母 M3.5	NUT 1 M3.5	
41	SB4893101	1	垫圈8	WASHER PLAIN 8	
42	018401436	4	螺栓 M4X14	BOLT SOCKET M4X14	
43	SB7313001	1	送布马达防护罩	PM COVER	
44	018501436	4	螺栓 M5X14	BOLT SOCKET M5X14	
45	0A5401006	3	螺钉(带垫圈) M4X10DB	SCREW PAN (S/P WASHER) M4X10	
46	062501016	1	螺钉 M5X10	SCREW PAN M5X10	
47	SB4096001	1	电线夹 #12	CORD HOLDER #12	
48	SB4155001	1	线夹	BAND	

S-7250A-202



D. 送り関係 / Feed mechanism

S7300A

REF.NO	CODE	QTY	品名	NAME OF PARTS	RM
1+	*P.49-51	1	<3枚歯用> オクリバ	<For 3ROW> FEED DOG	
1+	*P.49-51	1	<4枚歯用> オクリバ	<For 4ROW> FEED DOG	
2	SB4900001	2	シメネジ3	SCREW M3	
3	SB4879001	1	オクリダイクミ	FEED BAR ASSY	
4	SB5315101	1	ジョウゲオクリダイジクミ	FEED LIFTING R-BAR SHAFT ASSY	
5	014300432	1	アナクボミ3X4	SET SCREW SOCKET (CP) M3X4	
6	SA1242001	1	アタマトメクボミ5X7	SET SCREW 5X7	
7	SB4894001	1	ザガネ4.2 T0.8	WASHER PLAIN 4.2 T0.8	
8+	SB5294201	1	<-□□3用> ジョウゲオクリクミ3	<For -□□3> LIFTING FEED ASSY 3	
8+	SB5297201	1	<-□□05用> ジョウゲオクリクミ5	<For -□□05> LIFTING FEED ASSY 5	
9	SB4885101	1	ジョウゲオクリクランク	LIFTING FEED CRANK	
10	SB4888101	1	ジョウゲオクリウデ	LIFTING FEED ARM	
11	062501016	1	ナベコ5X10	SCREW PAN M5X10	
12	060401016	1	バインド4X10	SCREW BIND M4X10	
13	SB4901001	1	ザガネ4.2 T1.5	WASHER PLAIN 4.2 T1.5	
14	S23651001	2	アナヒラ6X6ホソメ	SET SCREW SOCKET (FT) M6X6	
15	SB5314101	1	オクリダイジクミ	FEED BAR SHAFT ASSY	
16	014300432	1	アナクボミ3X4	SET SCREW SOCKET (CP) M3X4	
17	SA1242001	1	アタマトメクボミ5X7	SET SCREW 5X7	
18	SB4894001	1	ザガネ4.2 T0.8	WASHER PLAIN 4.2 T0.8	
19	SB4887001	1	スイヘイオクリダイウデ	FEED ROCK BRACKET ARM	
20	SA7257001	1	シメネジ5X12	SCREW 5X12	
21	SB4889001	1	スイヘイオクリジク	FEED ROCK SHAFT	
22	048080142	1	トメワジクヨウC8	RETAINING RING EXTERNAL C8	
23	SB4893101	1	ザガネ8	WASHER PLAIN 8	
24	SB4882001	1	オクリジクメタルL	FEED SHAFT BUSH L	
25	SB4883001	1	オクリジクメタルM	FEED SHAFT BUSH M	
26	SB4884001	1	オクリジクメタルR	FEED SHAFT BUSH R	
27	012500536	3	アナヒラ5X5	SET SCREW SOCKET (FT) M5X5	
28	SB5300201	1	スイヘイオクリリンクソウクミ	FEED ROCK LINK UNIT	
29	012500536	2	アナヒラ5X5	SET SCREW SOCKET (FT) M5X5	
30	S23651001	2	アナヒラ6X6ホソメ	SET SCREW SOCKET (FT) M6X6	
31	021350106	2	1シュナット35	NUT 1 M3.5	
32	SB4893101	1	ザガネ8	WASHER PLAIN 8	
33	SB6430001	1	Pモータクミ	P MOTOR ASSY	
34	018401436	4	アナボルト4X14	BOLT SOCKET M4X14	
35	018501436	4	アナボルト5X14	BOLT SOCKET M5X14	
36	SB4892201	1	PMカバー	PM COVER	
37	0A5401006	3	+ナベザクミ4X10DB	SCREW PAN (S/P WASHER) M4X10	
38	228475000	1	ケツソクバンド1.9X80	FASTENING BAND 1.9X80	
39	149287000	2	ナイロンクランプ	CORD HOLDER 7N	
40	0A5401006	2	+ナベザクミ4X10DB	SCREW PAN (S/P WASHER) M4X10	
41	SA4224001	1	マークチュウイ30X40	MARK ATTENTION 30X40	