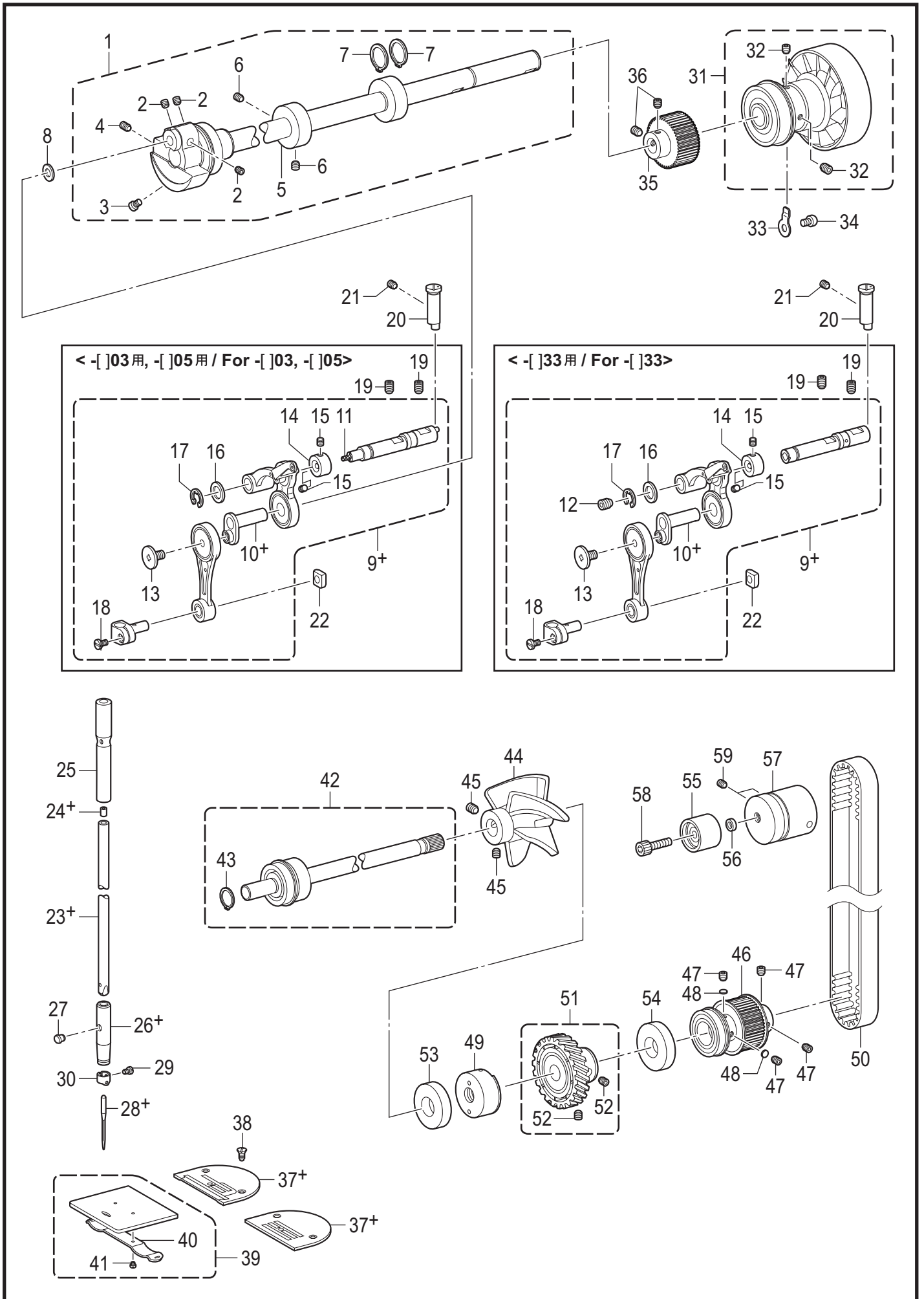


## B1. 针杆和挑线杆装置 / Needle bar and thread take-up mechanism

| 参照号 | 零部件序号     | 数量 | 零部件名称           | NAME OF PARTS                 | RM |
|-----|-----------|----|-----------------|-------------------------------|----|
| 1   | SB9830001 | 1  | 上轴组件            | UPPER SHAFT ASSY              |    |
| 2   | S25235001 | 1  | 螺钉 M8           | SCREW M8                      |    |
| 3   | S23651001 | 3  | 固定螺钉 M6X6       | SET SCREW SOCKET (FT) M6X6    |    |
| 4   | S25236001 | 1  | 螺钉 M6X10        | SET SCREW SOCKET (FT) M6X10   |    |
| 5   | SA1120001 | 1  | 绕线驱动轮           | BOBBIN WINDER DRIVING WHEEL   |    |
| 6   | S23651001 | 2  | 固定螺钉 M6X6       | SET SCREW SOCKET (FT) M6X6    |    |
| 7   | 110367001 | 1  | 垫圈 8            | WASHER, PLAIN SPECIAL 8       |    |
|     |           |    | <用于-403>        | <For -403>                    |    |
| 8+  | SB2914001 | 1  | 针杆连杆总组件         | NEEDLE BAR CONNECTING ROD SET |    |
| 9+  | SA7628001 | 1  | 针杆曲柄            | NEEDLE BAR CRANK              |    |
|     |           |    | <用于-405>        | <For -405>                    |    |
| 8+  | SB2916001 | 1  | 针杆连杆总组件         | NEEDLE BAR CONNECTING ROD SET |    |
| 9+  | SA7626001 | 1  | 针杆曲柄            | NEEDLE BAR CRANK              |    |
|     |           |    | <用于-433>        | <For -433>                    |    |
| 10  | SB2915101 | 1  | 针杆连杆总组件         | NEEDLE BAR CONNECTING ROD SET |    |
| 11  | SA7628001 | 1  | 针杆曲柄            | NEEDLE BAR CRANK              |    |
| 12  | SA8061001 | 1  | 螺钉封 M3X4        | SET SCREW SOCKET(CP)M3X4 SEAL |    |
| 13  | SA2422001 | 1  | 螺钉 SM3.57-40X6L | SCREW, SM3.57L                |    |
| 14  | 012400436 | 2  | 螺钉 M4X4         | SET SCREW SOCKET (FT) M4X4    |    |
| 15  | SA2161001 | 1  | 垫圈              | WASHER                        |    |
| 16  | 048060342 | 1  | 挡圈 E6           | RETAINING RING E6             |    |
| 17  | SA7239101 | 1  | 定位销             | STOPPER PIN                   |    |
| 18  | 012500536 | 1  | 螺钉 M5X5         | SET SCREW SOCKET (FT) M5X5    |    |
| 19  | 012061036 | 2  | 螺钉 M6X10        | SET SCREW SOCKET (FT) M6X10   |    |
| 20  | SA9650101 | 1  | 针杆接头            | NEEDLE BAR CLAMP              |    |
| 21  | 140004001 | 1  | 螺钉 SM3.57-40X7  | SCREW, SM3.57-40X7            |    |
| 22  | SB1029101 | 1  | 角滑块D            | SLIDE BLOCK D                 |    |
| 23+ | * P.57    | 1  | 针杆              | NEEDLE BAR                    |    |
|     |           |    | <用于欧洲以外: -4□3>  | <Except for Europe: -4□3>     |    |
| 24+ | * P.57    |    | 机针DBX1...(#14)  | NEEDLE DBX1...(#14)           |    |
|     |           |    | <用于欧洲以外: -405>  | <Except for Europe: -405>     |    |
| 24+ | * P.57    |    | 机针DBX1...(#22)  | NEEDLE DBX1...(#22)           |    |
|     |           |    | <用于欧洲: -4□3>    | <For Europe only: -4□3>       |    |
| 24+ | * P.57    |    | 机针DBX5...(#14)  | NEEDLE, DPX5...(#14)          |    |
|     |           |    | <用于欧洲: -405>    | <For Europe only: -405>       |    |
| 24+ | * P.57    |    | 机针DBX5...(#22)  | NEEDLE, DPX5...(#22)          |    |
| 25  | 140553102 | 1  | 固定螺钉 SM3.18     | SET SCREW, SM3.18             |    |
| 26  | SB1537001 | 1  | 接头组件            | JOINT UNIT                    |    |
| 27  | S23651001 | 2  | 固定螺钉 M6X6       | SET SCREW SOCKET (FT) M6X6    |    |
| 28  | SA2250101 | 1  | 同步轮U            | TIMING PULLEY U               |    |
| 29  | S38712001 | 1  | 法兰              | FLANGE                        |    |
| 30  | S38713100 | 1  | 叶轮              | FAN                           |    |
| 31  | SA2404001 | 3  | 螺钉组件 M4X35DB    | SCREW, PAN (S WASHER) M4X35   |    |
| 32  | 151594001 | 1  | 针杆过线环           | NEEDLE BAR THREAD GUIDE       |    |
| 33+ | * P.57-60 | 1  | 针板              | NEEDLE PLATE                  |    |
| 34  | 151267001 | 2  | 螺钉 SM4.37-40X8  | SCREW, FLAT SM4.37-40X8       |    |
| 35  | 180018251 | 1  | 推板组件            | SLIDE PLATE ASSY              |    |
| 36  | 114561001 | 1  | 推板簧             | SPRING, PLATE                 |    |
| 37  | SA9523001 | 2  | 螺钉 SM2.38       | SCREW SM2.38                  |    |
| 38  | SA5278001 | 1  | 下轴组件            | LOWER SHAFT ASSY              |    |
| 39  | 048120142 | 1  | 轴用挡圈 C12        | RETAINING RING EXTERNAL C12   |    |
| 40  | S25401100 | 1  | 油封              | OIL SEAL                      |    |
| 41  | SA1317101 | 1  | 油封              | OIL SEAL                      |    |
| 42  | SB2403001 | 1  | 下轴齿轮组件          | LOWER SHAFT GEAR ASSY         |    |
| 43  | S23651001 | 2  | 固定螺钉 M6X6       | SET SCREW SOCKET (FT) M6X6    |    |
| 44  | SA2251001 | 1  | 同步轮D            | TIMING PULLEY D               |    |
| 45  | S23651001 | 2  | 固定螺钉 M6X6       | SET SCREW SOCKET (FT) M6X6    |    |
| 46  | SA2378001 | 2  | 垫片 4.8          | SPACER,4.8                    |    |



## B. 針棒・天秤関係 / Needle bar and thread take-up mechanism

| REF.NO | CODE      | QTY | 品名             | NAME OF PARTS               | RM |
|--------|-----------|-----|----------------|-----------------------------|----|
| 37+    | *P.49-51  | 1   | <3枚歯用><br>ハリイタ | <For 3ROW><br>NEEDLE PLATE  |    |
| 37+    | *P.49-51  | 1   | <4枚歯用><br>ハリイタ | <For 4ROW><br>NEEDLE PLATE  |    |
| 38     | 100032003 | 2   | サラネジ4.37       | SCREW, FLAT SM4.37-40X8     |    |
| 39     | 180018151 | 1   | スベリイタクミ        | SLIDE PLATE ASSY            |    |
| 40     | 114561001 | 1   | スベリイタウラバネ      | SPRING, PLATE               |    |
| 41     | SA9523001 | 2   | シメネジ2.38       | SCREW SM2.38                |    |
| 42     | SB5316101 | 1   | シタジククミ         | LOWER SHAFT ASSY            |    |
| 43     | 048120142 | 1   | トメワジクヨウC12     | RETAINING RING EXTERNAL C12 |    |
| 44     | SB4848001 | 1   | シタジクファン        | LOWER SHAFT FAN             |    |
| 45     | S23651001 | 2   | アナヒラ6X6ホソメ     | SET SCREW SOCKET (FT) M6X6  |    |
| 46     | SB5291101 | 1   | タイミングプーリDオオクミ  | TIMING PULLEY D UNIT        |    |
| 47     | S23651001 | 4   | アナヒラ6X6ホソメ     | SET SCREW SOCKET (FT) M6X6  |    |
| 48     | SA2378001 | 2   | カンザ4.8         | SPACER 4.8                  |    |
| 49     | SB5037001 | 1   | シタジクメタル        | LOWER SHAFT BUSH            |    |
| 50     | SA2252101 | 1   | タイミングベルト       | TIMING BELT                 |    |
| 51     | SA1166001 | 1   | シタジクギアクミ       | LOWER SHAFT GEAR ASSY       |    |
| 52     | S23651001 | 2   | アナヒラ6X6ホソメ     | SET SCREW SOCKET (FT) M6X6  |    |
| 53     | SB5628001 | 1   | オイルシール12-30    | OIL SEAL 12-30              |    |
| 54     | SB5629001 | 1   | オイルシール12-35    | OIL SEAL 12-35              |    |
| 55     | SB5317001 | 1   | テンションプーリクミ     | TENSION PULLEY ASSY         |    |
| 56     | SB4857001 | 1   | テンションプーリカラー    | COLLAR                      |    |
| 57     | SB4858001 | 1   | ベルトチョウセツジク     | REGULATION SHAFT            |    |
| 58     | SB5039001 | 1   | アナボルト8X25      | BOLT SOCKET M8X25           |    |
| 59     | 012500536 | 2   | アナヒラ5X5        | SET SCREW SOCKET (FT) M5X5  |    |